

CELL :- A337 **CELL NAME:-** Oil pump **MACHINE / STAGE :-** Flushing M/c **OPERATION :-** Flushing

KAIZEN THEME :-To Prevent Chips on oil pump Flushing Tank.

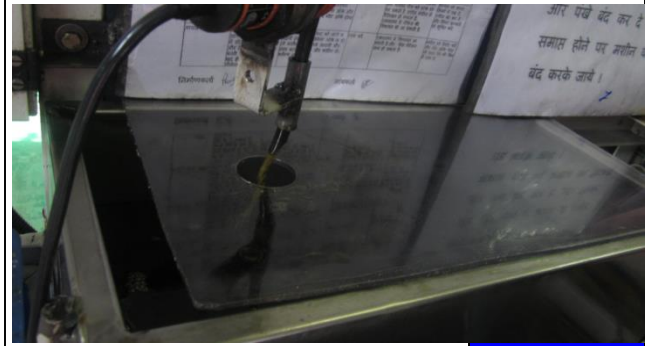
IDEA :- To Provide Extra Flushing oil Trey For Chips Prevent.

WIDELY/DEEPLY:-

COUNTERMEASURE :- Provide Filter Paper & Trey.

BENCHMARK	0 nos..
TARGET	0
KAIZEN START	10.04.14
KAIZEN FINISH	15.04.14

PROBLEM / PRESENT STATUS :- Chips on Flushing Tank.



TEAM MEMBERS :-

Ramesh joshi,

BENEFITS :-

- 1) Improve Quality

KAIZEN SUSTENANCE

BEFORE

AFTER

WHY - WHY ANALYSIS :-
WHY 1:- Possibility of Chips on Flushing Tank
ANS 1:- After Free Rotation Dust & Chips Particle on Flushing Tank.

RESULT :- No Chips on Flushing Tank.

WHAT TO DO :- Provide Trey on Flushing Tank.

FREQUENCY:- Daily

ROOT CAUSE :- Possibility of Chips on Flushing Tank

COST INCURRED FOR MAKING KAIZEN

MATERIAL COST RS.	LABOUR COST RS.	TOTAL COST RS.
-----	-----	-----

REGISTRATION NO&DATE:

SCOPE & PLAN FOR HORIZONTAL DEPLOYMENT

REGISTERED BY :-

SR. NO.	CELL	TARGET	RESPONSIBILITY	STATUS
1	A177	15.04.14	Ramesh joshi	Close

MANAGER'S SIGN :-

CELL :- A 315, **CELL NAME:-** Oil Pump **MACHINE / STAGE :-** Free Rotation **OPERATION :-** Free Rotation

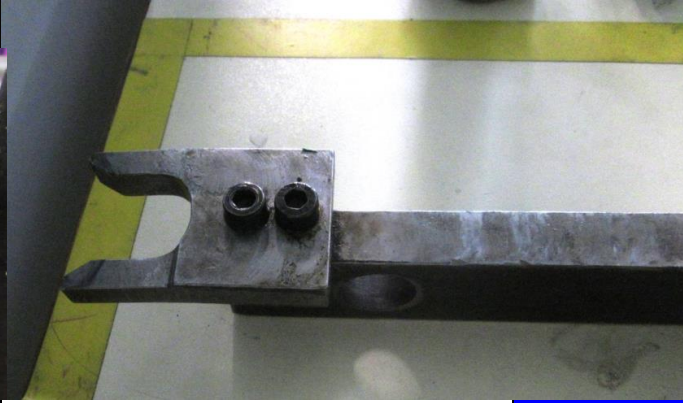
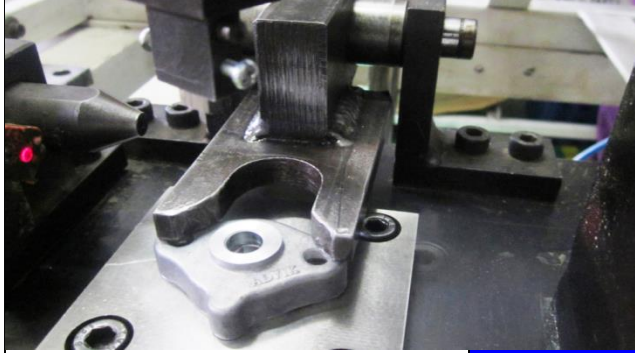
KAIZEN THEME :- Common Clamp For Oil Pump A 387, A315 ,

IDEA :- Save setting time . Of line Change .

WIDELY/DEEPLY:-

COUNTERMEASURE :- Common Clamp for Oil Pump A315,A387,

PROBLEM / PRESENT STATUS :- To Reduce Line Change Cycle Time.



BENCHMARK	0.
TARGET	0
KAIZEN START	10.05.14
KAIZEN FINISH	19.05.14

TEAM MEMBERS :-
Ramesh joshi,

BENEFITS :-
1) Save setting Time.

KAIZEN SUSTENANCE

BEFORE

AFTER

WHAT TO DO :- Provide Common Clamp.

WHY - WHY ANALYSIS :-
WHY 1:- Clamp Change Time Min. 1Hr.,
ANS 1:- Same M/c for Free Rotation, Oil Pump A387,A315

RESULT :- Clamp change time Reduce 40 Min. to 5 Min.

FREQUENCY:-

ROOT CAUSE :-

COST INCURRED FOR MAKING KAIZEN

MATERIAL COST RS.	LABOUR COST RS.	TOTAL COST RS.
-----	-----	-----

REGISTRATION NO&DATE:

SCOPE & PLAN FOR HORIZONTAL DEPLOYMENT

REGISTERED BY :-

SR. NO.	CELL	TARGET	RESPONSIBILITY	STATUS
1	A177	19.04.14	Ramesh joshi	Process

MANAGER'S SIGN :-